



Cincinnati Market

LAND LISTING REPORT

MARCH 2023

MARCH 2023

KENTUCKY



Independence, KY

145 McCullum Pike
Independence, KY 41051

FOR SALE OR LEASE

3.35 Acres
Call for Details

- 3.3 Acres - Will Divide
- Call for Details

John Thompson

513.588.1842



Union, KY

US-42 & Old Union Road
Union, KY 41091

FOR SALE OR LEASE

3.5 Acres
Call for Details

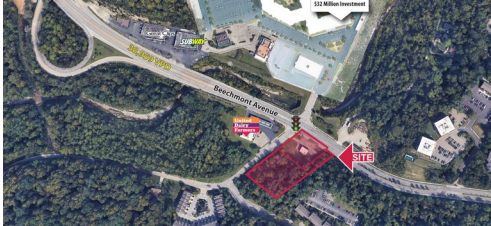
- Signalized access on expanded US 42
- Situated in affluent and growing Union KY
- Seeking high end restaurant, medical, office and other uses
- Site will not allow fast food, gas, automotive, etc.

John Thompson

513.588.1842

MARCH 2023

BEECHMONT / OWENSVILLE / UNION TWP.



5315 Beechmont Avenue

5315 Beechmont Avenue
Cincinnati, OH 45244

FOR SALE OR LEASE

1.918 Acres
Call for Details

- Ground Lease or BTS
- 2 parcels totaling 1.918 acres
- Zoned Business District E
- Suitable for multitude of retail uses - drive-thru potential
- Located across the street from the Skytop- \$32 Million apartment development

Gary Fisher
513.588.1125



8074 Beechmont Avenue

8074 Beechmont Avenue
Cincinnati, OH 45255

FOR SALE

2.43 Acres
\$1,750,000

- Rare development opportunity
- Located in a very dense infill market
- Strong traffic counts
- Easy ingress and egress with multiple curb cuts
- Access to 2 traffic lights

John Thompson
513.588.1842



212 S Broadway Street

212 S Broadway Street
Owensville, OH 45160

FOR SALE

0.755 Acres
\$425,000

- Pad ready retail site.
- 150' of street frontage.
- Across from Owensville Police Department & Post Office.
- Retail - PUD

Stewart Devitt
513.588.1115

Dan McDonald
513.588.1113



Clepper Lane & Glen Este Withamsville Road

Union Township, OH 45245

FOR SALE

5 Acres
\$525,000 / Acre

- 5 - 10 Acres at the corner of Clepper Lane and Glen Este Withamsville Road in Union Township
- Corner traffic light
- Huge customer traffic day and night!
- Adjacent to recently expanded Aldi Grocery

John Thompson
513.588.1842

Chris Nachtrab
513.588.1841

MARCH 2023

OAKLEY



3000 Disney Street

3000 Disney Street
Oakley, OH 45209

FOR SALE

13.26 Acres
Subject to Offer

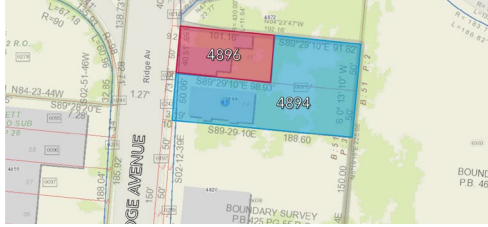
- 13.26-acres of land available for development with almost 1/2 mile of highway frontage. (Highway Signage Available)

George Flynn

513.588.1126

TC Bartoszek

513.588.1840



4894 Ridge Avenue

4894 Ridge Avenue
Cincinnati, OH 45209

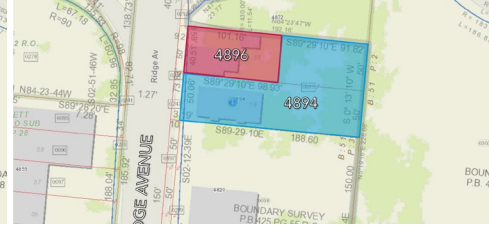
FOR SALE

0.324 Acres
\$249,000

- .324-.429 acre site available for Auto repair, medical, office, retail in bustling Oakley, Ohio!
- Excellent traffic, location at the Kennedy Connector Interchange ramp to I-71 S and OH-562
- Neighboring .105 acres available for long-term lease.

Gary Fisher

513.588.1125



4896 Ridge Avenue

4896 Ridge Avenue
Cincinnati, OH 45209

FOR LEASE

0.117 Acres
Call for Details

- Land site available for small office or retail development opportunity in bustling Oakley, Ohio!
- This site boasts an excellent location at the Kennedy Connector Interchange where Ridge Avenue meets I-71 and OH-562 (Norwood lateral)

Gary Fisher

513.588.1125



Ivy Hills Center

7397 Main Street
Newtown, OH 45244

FOR SALE

0.5-2.65 Acres
\$550,000

- Up to 2.65 acres available
- Traffic light access
- Close proximity to US-50
- Frontage on Main Street

TC Bartoszek

513.588.1840

Molly Hoffman

513.588.1843

MARCH 2023

COLLEGE HILL



1857 Dreman Avenue

1857 Dreman Avenue
Cincinnati, OH 45223

FOR SALE

5.16 Acres
\$200,000

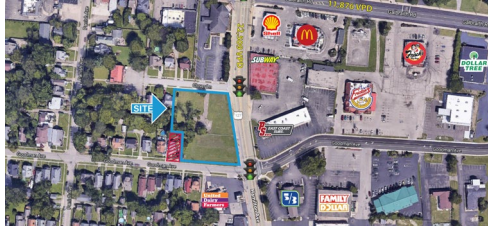
- Located in an Opportunity Zone
- Utilities to the site

Stewart Devitt

513.588.1115

William Schneller

513.588.1108



6825 Hamilton Avenue

6825 Hamilton Avenue
College Hill, OH 45224

FOR SALE

1.03 Acres
\$825,000

- Deed Restrictions on sale of gas, ice cream, tobacco, beer/wine, and coffee

Stewart Devitt

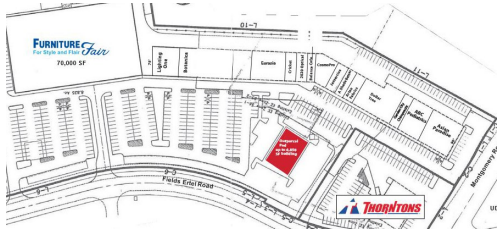
513.588.1115

Dan McDonald

513.588.1113

MARCH 2023

MASON / LOVELAND / FIELDS ERTel



McCabe Crossing Outparcel

9521 Fields Ertel Road
Cincinnati, OH 45249

FOR LEASE

Up to 6,850 SF Building
Call for Details

- Seeking apparel, shoes, toys, housewares, sporting goods, printing, paint, bakery, tanning, hair salons, etc.
- Service a fast-growing upscale population

John Thompson
513.588.1842

TC Bartoszek
513.588.1840

Molly Hoffman
513.588.1843



Land at Deerfield Town Center

Mason Montgomery & Irwin Simpson Rds
Mason, OH 45040

FOR SALE

2 Acres
\$1,250,000

- Excellent site for bank, office, medical
- All utilities available at site
- Currently zoned residential will require re-zoning

John Thompson
513.588.1842



Parkside Drive & SR- 741

Parkside Drive & SR- 741
Mason, OH 45040

FOR SALE

2.157 Acres
\$850,000

- 800" Frontage on State Route 741
- Situated in the heart of Warren County's popular entertainment district that includes Kings Island, The Beach Waterpark, Great Wolf Lodge & Lindner Family Tennis Center.
- Across the street from Mason Grand & Villages of Mason, two new residential developments featuring 500+ units.

Stewart Devitt
513.588.1115

Dan McDonald
513.588.1113

MARCH 2023

MILFORD



Wolfpen Pleasant Hill Road

Wolfpen Pleasant Hill Road
Milford, OH 45150

FOR SALE

3.45 Acres
\$425,000

- Land for sale on Wolfpen Pleasant Hill Road

[Chris Nachtrab](#)
513.588.1841

[TC Bartoszek](#)
513.588.1840



745 Round Bottom Road

745 Round Bottom Road
Milford, OH 45150

FOR SALE

5.006 Acres
\$1,250,000

- Site can support up to 50,000 SF building
- Zoning: PD Planned Development
- Delivery of custom building in 15-18 months
- Utilities in place
- Corner site located at a signalized intersection
- Approx. 1.3 miles to Interstate 275
- Retail and restaurants located nearby

[George Stinson](#)
513.588.1136



Streets of West Chester Parcel

Civic Center Boulevard
West Chester, OH 45069

FOR LEASE

10,000 SF
\$115,000 / Year (Gross)

- Now Open: Chuy's Tex Mex, Duluth Trading Company, Holtman's Donuts, and Matt The Miller's
- Outlot Available for up to 10,000 SF Building
- Sonder Brewing coming soon!

[TC Bartoszek](#)
513.588.1840

[Molly Hoffman](#)
513.588.1843

MARCH 2023

FAIRFIELD / HAMILTON



Parkland Hills Dr & Gilmore Rd

Parkland Hills Drive & Gilmore Road
Fairfield, OH 45014

FOR SALE OR LEASE

0.982 Acres
\$275,000

- Dixie Hwy. business corridor behind Superior Acura, south of Jungle Jims
- Zoned General Business C-3A [potential drive-thru]
- Traffic count Dixie Hwy & Gilmore 34,187
- Average HH Income 3 mile \$77,855
- Est 2021 Population 5 mile 162,025
- Strong traffic, demographics, daytime population

Gary Fisher
513.588.1125



9510 Seward Road

9510 Seward Road
Fairfield, OH 45014

FOR SALE

2.3 Acres
\$290,000

- Zoning: M-2 General Industrial
- Close access to I-275 and I-75
- Multiple Parcels

Paul Schmerge
513.305.5690

Chas Cook
513.588.1132



7245 Dixie Highway

7245 Dixie Highway
Fairfield, OH 45014

FOR SALE

Up to 1 Acre
Call for Details

- Located in a great area off of Dixie Highway in Fairfield.
- This site is available for sale or build to suit up to 1 acre.

Gage Wiethorn
513.588.1139

Matthew Johnson
513.588.1844

Courtney Champa
513.588.1134



9108 Sutton Place

9108 Sutton Place
Hamilton, OH 45011

FOR LEASE

Trailer Parking
Call for Details

- Trailer Parking for Lease close to I-275 and I-75

Paul Schmerge
513.305.5690

MARCH 2023

LEBANON / MAINVILLE



State Route 48 & I-71

State Route 48 & I-71
Lebanon, OH 45036

FOR SALE

10.9 Acres
\$949,000

- Zoning: GC - General Commercial
- Parcel: #1202200007
- Price Reduced: \$949,000
(\$87,064/acre)

Paul Schmerge
513.305.5690



Hamilton Township Pointe

SR 22 & SR 48
Mainville, OH 45039

FOR LEASE

1-4 Acres
Negotiable

- Across from planned new Kroger Marketplace
- Zoned: B-2, General Business District
- Utilities in SR-48 & Towne Center Blvd right-of-way
- Traffic light to SR 48
- Planned Road Improvements on SR 48
- Outlots available for Sale/Lease/BTS
- Fronting planned 312-unit luxury apartment complex

Chris Nachtrab
513.588.1841

George Flynn
513.588.1126



Stephens Road & SR- 48

Stephens Road & SR- 48
Mainville, OH 45039

FOR LEASE

5 Acres
Negotiable

- \$150,000 Per Acre GL / Flex Pricing
TBD

TC Bartoszek
513.588.1840

Molly Hoffman
513.588.1843



Union Village Development

Route 741 North of Route 63
Lebanon, OH 45036

FOR SALE OR LEASE

30 Acre Development
Call for Details

- Planned 30-acre retail at the NE corner of Route 741 and 63. Seeking grocery anchor, apparel and other shopping center retailers
- Land at the SE corner of Route 741 and 63, planned get-go gas/convenience store, other fast food, automotive, banks, car wash and other single tenant users

John Thompson
513.588.1842

TC Bartoszek
513.588.1840

MARCH 2023

TRENTON / MIDDLETOWN / MASON



Trenton Industrial Park Phase 2

Kennel Road
Trenton, OH 45067

FOR SALE

148.61 Acres
\$6,687,405

- Phase 2 of the Trenton Industrial Park adds an additional 199 acres to the City of Trenton's planned industrial development. This property is suitable to meet the needs of all industrial users with the ability to offer 100+ acres to a large manufacturing company and a 15-acre parcel to a smaller owner/user or built-to-suit developer.

George Stinson
513.588.1136



3722 Towne Boulevard

3722 Towne Boulevard
Middletown, OH 45005

FOR SALE

25.06 Acres
\$130,000 / Acre

- 25.06 AC Land in Middletown, OH for Sale

Stewart Devitt
513.588.1115

Dan McDonald
513.588.1113



Mason-Montgomery & Bethany Roads

Mason, OH 45040

FOR SALE

2.2 Acres
\$935,000

- Pad-ready parcel with all utilities to site; share drive with new UDF
- Prime location in Mason, the largest city in Warren County and home to a prestigious local business community
- Vast customer base to draw from
- Mason offers creative innovation centers to help grow business including The Campus Technology District & Business Accelerator

Stewart Devitt
513.588.1115

Dan McDonald
513.588.1113



Tower Park Retail Devel.

710 Tylersville Road
Mason, OH 45040

FOR SALE

1-3 Acres
Subject to Offer

- Multiple lots available for development
- Strong Mason retail market
- Multiple access points
- Retailers in the area include TJ Maxx, Target, Home Depot, Kohl's, Meijer, Menards, JCPenney, LA Fitness and more
- Great opportunity for retail, office, restaurant and more

John Thompson
513.588.1842

TC Bartoszek
513.588.1840

Chris Nachtrab
513.588.1841

MARCH 2023

MIAMISBURG / DAYTON / ENGLEWOOD



Austin East Development

Springboro Pike Frontage Road
Miamisburg, OH 45342

FOR SALE

4.7 Acres
Call for Details

- Across from Austin Landings, a high-end mixed-use development, including Field and Stream, Kohl's, Cinépolis, TJ Maxx, Kroger, hotels, retailers, and residential
- Join Chick-fil-A, Flying Ace Car Wash, & Chase Bank
- Traffic Signal Access
- Zoned: PD-1
- Frontage along State Route 741

[John Thompson](#)

513.588.1842



Paragon Road

Paragon Road
Dayton, OH 45459

FOR SALE

1.87 Acres
\$308,550

- AVAILABLE: 1.87 Acre Lot
- PRICING: \$308,550; \$165,000 Per Acre
- TRAFFIC COUNTS: I-675 - 78,608 VPD, Paragon Road - 12,418 VPD
- PD-O2 Zoning
- 14,000 SF building already approved for the site
- No earnings tax!

[Chris Nachtrab](#)

513.588.1841

[TC Bartoszek](#)

513.588.1840

[Molly Hoffman](#)

513.588.1843



W National Road

W National Road
Englewood, OH 45322

FOR SALE

10.892 Acres
\$1,350,000

- Located in Englewood, Ohio, on the corner of W National Rd. and Union Blvd.
- Property has two curb cuts with 475' of frontage on W National Rd.
- Zoned: C-3 in the City of Englewood.

[Stewart Devitt](#)

513.588.1115

[Dan McDonald](#)

513.588.1113